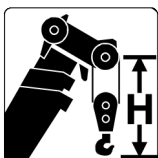

DEMAG AC 100


Type	Possible Load	Weight	H
5 Sheave	70t	650kg	2.0m
3 Sheave	46t	550kg	1.8m
- 1 Sheave -	20t	300kg	1.8m
- Ball Hook -	6.8t	170kg	1.0m



Demag AC 100 100 Tonne

12 - 60.0m
 8.1 x 7.2m
 360°
 26.1t

Main Boom (m)

Radius	12	16.3	20.5	24.8	29.1	33.4	37.6	38.1	41.9	46.2	50.9	54.7	59.4	Radius
3	73.8	72	69.9	58.4										3
3.5	67.6	66.8	64.8	58.2										3.5
4	62.3	62.2	60.3	56.3	37.4									4
4.5	57.4	57.8	56.4	54.4	36.5									4.5
5	53.1	53.4	53	52.2	35.6	29.8								5
6	46	46.6	46.3	46.5	33.9	27.2	27.2	25.6						6
7	40.4	41.2	41.3	41.1	32.3	25.1	25.5	24.1						7
8	35.9	36.7	36.8	36.6	31	22.9	23.9	22.7	20.1					8
9		33	33.1	33	29.7	21.4	22.3	21.3	19	12.4				9
10		29.9	30.1	29.9	28.4	19.9	20.8	19.9	17.9	12.2	10.7			10
12		23	23.1	23.6	23.6	17	18.4	17.8	15.9	11.3	10.5	9.1	6.6	12
14			19	18.9	18.6	15.1	16.1	15.8	14.3	10.3	9.8	8.9	6.6	14
16			15.5	15.5	15.2	13.5	14.2	14.3	12.8	9.5	9.2	8.6	6.6	16
18				13	12.6	12.3	11.7	12.6	11.4	8.6	8.6	8.2	6.6	18
20				11	10.7	11.2	9.8	10.6	9.8	7.8	8	7.7	6.5	20
22					9.6	9.7	8.6	9.1	8.3	7.2	7.3	7.2	6.2	22
24					8.7	8.4	7.9	7.9	7.1	6.7	6.9	6.7	5.8	24
26						7.4	7.4	6.9	6.6	6.1	6.4	6.2	5.5	26
28						6.6	6.7	6	6.1	5.6	6	5.8	5.2	28
30							6	5.3	5.7	5.2	5.4	5.1	4.8	30
32							5.4	4.6	5.3	4.9	4.7	4.4	4.4	32
34								4.1	4.7	4.5	4.1	3.9	3.9	34
36									4.2	4	3.6	3.3	3.3	36
38										3.6	3.2	2.9	2.9	38
40										3.2	2.8	2.5	2.5	40
42										2.9	2.4	2.2	2.2	42
44											2.1	1.8	1.8	44
46											1.8	1.6	1.5	46
48												1.3	1.3	48
50												1.1	1.1	50
52													0.8	52

DEMAG AC 100



12 - 60.0m



8.1 x 7.2m



360°



21.3t

Main Boom (m)

Radius	12	16.3	20.5	24.8	29.1	33.4	37.6	38.1	41.9	46.2	50.9	54.7	59.4	Radius
3	73.6	72	69.9	58.4										3
3.5	67.4	66.8	64.8	58.2										3.5
4	61.8	62.1	60.3	56.3	37.4									4
4.5	56.8	57.2	56.4	54.4	36.5									4.5
5	52.5	52.9	52.8	52.2	35.6	29.8								5
6	45.5	46.3	46.3	46.2	33.9	27.2	22.7	25.6						6
7	40	40.8	40.9	40.7	32.3	25.1	21.1	24.1						7
8	35.5	36.3	36.5	36.3	31	22.9	19.7	22.7	20.1					8
9		32.5	32.6	32.4	29.7	21.4	18.3	21.3	19	15.9				9
10		27.4	27.6	27.2	28.1	19.9	17	19.9	17.9	15.2	10.7			10
12		20.5	21.4	21.3	21	17	15.1	17.8	15.9	13.9	10.5	9.1	6.6	12
14			16.8	16.8	16.5	15.1	13.2	15.8	14.3	12.6	9.8	8.9	6.6	14
16			13.7	13.7	13.4	13.5	11.8	13.3	12.4	11.4	9.2	8.6	6.6	16
18				11.4	11.4	11.6	10.6	11	10.1	10.3	8.6	8.2	6.6	18
20				9.7	10.1	9.8	9.4	9.3	8.4	8.6	8	7.7	6.5	20
22					8.7	8.4	8.2	7.9	7.7	7.2	7.3	7.2	6.2	22
24					7.6	7.3	7.5	6.8	7	6.7	6.9	6.6	5.8	24
26						6.7	6.6	5.8	6.5	6.1	6	5.7	5.5	26
28						6	5.8	5	5.7	5.6	5.2	4.9	4.9	28
30							5.1	4.4	5	4.9	4.5	4.2	4.2	30
32							4.7	3.8	4.4	4.3	3.9	3.6	3.6	32
34								3.3	3.9	3.7	3.3	3.1	3.1	34
36									3.5	3.3	2.9	2.6	2.6	36
38										2.9	2.5	2.2	2.2	38
40										2.5	2.1	1.8	1.8	40
42										2.2	1.8	1.5	1.5	42
44											1.5	1.2	1.2	44
46											1.3	1.0	1.0	46
48												0.7	0.7	48



Demag AC 100 100 Tonne

 12 - 60.0m
  8.1 x 7.2m
  360°
  15.3t

Main Boom (m)

Radius	12	16.3	20.5	24.8	29.1	33.4	37.6	40.4	44.7	49.9	50.9	54.6	59.4	Radius
3	73.3	72.0	69.9	58.4										3
4	61.0	61.3	60.3	56.3	48.3									4
5	51.8	52.2	52.1	52.2	43.8	32.2								5
6	44.9	45.7	45.8	45.6	39.8	31.1	27.2							6
7	39.4	40.2	40.3	39.0	35.6	30.1	25.5							7
8	32.9	34.2	34.5	32.6	31.0	29.0	23.9	20.1						8
9		27.8	28.0	29.0	27.4	25.3	22.3	19.0	15.9					9
10		23.2	24.3	24.3	23.9	22.1	20.8	17.9	15.2	9.4	11.9			10
12		17.6	18.1	18.1	17.7	17.1	17.1	15.6	13.9	9.0	11.6	9.1	6.6	12
14			14.2	14.1	13.8	14.4	13.7	13.1	12.3	8.4	10.8	8.9	6.6	14
16			11.5	11.4	11.9	11.6	11.3	11.3	10.7	7.9	10.0	8.6	6.6	16
18				10.0	9.9	9.6	9.8	9.3	9.3	7.3	8.5	8.2	6.6	18
20				8.5	8.4	8.5	8.3	8.2	7.8	6.7	7.1	7.2	6.5	20
22				7.2	7.2	7.3	7.1	7.0	6.9	6.2	5.9	6.3	5.8	22
24				6.5	6.3	6.3	6.0	5.9	5.8	4.9	5.5	4.9	4.9	24
26				4.1	5.5	5.5	5.2	5.1	5.1	4.0	4.7	4.1	4.1	26
28				4.9	4.8	4.5	4.6	4.4	4.4	3.3	4.0	3.5	3.5	28
30				4.0	4.2	4.0	4.0	3.7	2.7	3.4	3.0	3.0	3.0	30
32				3.7	3.7	3.5	3.2	2.2	2.8	2.5	2.5	2.5	2.5	32
34				2.3	3.3	3.0	2.8	1.8	2.4	2.1	2.1	2.1	2.1	34
36				2.9	2.6	2.4	1.4	2.0	1.7	1.7	1.7	1.7	1.7	36
38				1.7	2.3	2.0	1.0	1.6	1.3	1.3	1.3	1.3	1.3	38
40				2.0	1.7	0.7	1.3	1.0	1.0	1.0	1.0	1.0	1.0	40
42				1.4	1.4	1.0	0.7	1.0	0.7	0.7	0.7	0.7	0.7	42
44				1.2	0.8	0.8	0.8	0.8	0.8	0.8	0.8	0.8	0.8	44

DEMAG AC 100



12 - 60.0m



8.1 x 7.2m



360°



10.1t

Main Boom (m)

Radius	12	16.3	20.5	24.8	29.1	33.4	37.6	38.1	41.9	46.2	50.9	54.7	59.4	Radius
3	72.8	72	69.9	58.4										3
3.5	66	66.4	64.8	58.2										3.5
4	60.3	60.7	60.3	56.3	37.4									4
4.5	55.5	55.8	55.7	54.4	36.5									4.5
5	51.3	51.7	51.5	51.9	35.6	29.8								5
6	44.4	45.2	45.3	41.6	33.9	27.2	27.2	25.6						6
7	36.5	38.1	36.4	33.7	32.3	25.1	25.5	24.1						7
8	28.2	29.5	29.8	29.5	27.5	22.9	23.6	22.7	20.1					8
9		23.9	25.1	25.1	23.6	21.4	20.3	20.5	19	15.9				9
10		19.9	21	21	20.6	19.4	17.6	18.6	16.8	15.2	10.7			10
12		14.5	15.5	15.5	15.5	15.7	14.7	14.7	13.2	12.7	10.5	9.1	6.6	12
14			12	12.3	12.6	12.2	12	11.6	11.7	10.3	9.8	8.9	6.6	14
16			9.9	10.2	10.1	10.3	10	9.2	9.9	9.5	9	8.4	6.6	16
18				8.5	8.5	8.5	8.5	7.5	8.2	8	7.5	6.9	6.6	18
20				7.1	7.3	7.2	7.1	6.2	6.9	6.7	6.2	5.7	5.4	20
22					6.2	6.1	6	5.1	5.8	5.6	5.2	4.7	4.4	22
24					5.4	5.2	5.2	4.2	4.9	4.7	4.3	3.8	3.6	24
26						4.5	4.4	3.4	4.1	4	3.5	3.1	2.9	26
28							3.9	3.8	2.8	3.5	3.3	2.9	2.4	28
30								3.3	2.3	3	2.8	2.4	2.1	30
32									2.8	1.8	2.5	2.3	1.9	32
34										1.8	2.1	1.9	1.5	34
36											1.8	1.6	1.1	36
38												1.3	0.8	38
40													1.0	40
42														42



Demag AC 100
100 Tonne

12 - 60.0m
 8.1 x 7.2m
 360°
 6.9t

Main Boom (m)

Radius	12	16.3	20.5	24.8	29.1	33.4	37.6	38.1	41.9	46.2	50.9	54.7	59.4	Radius
3	72.3	72	69.9	58.4										3
3.5	65.6	65.9	64.8	58.2										3.5
4	59.9	60.3	60.1	56.3	37.4									4
4.5	55.1	55.5	55.3	54.4	36.5									4.5
5	50.9	51.3	51.8	48.4	35.6	29.8								5
6	43.2	44.3	41	37.5	33.9	27.2	27.2	25.6						6
7	32.6	34.2	32.8	31.8	29.4	25.1	24.9	24.1						7
8	25.1	26.4	27.8	26.6	24.7	22.9	21	21.2	19.8					8
9		21.9	22.5	22.5	21.2	20.3	18.3	19.1	16.9	15.9				9
10		18.2	18.8	18.7	18.4	18.1	16.6	16.6	14.6	14.2	10.7			10
12		13.3	13.8	13.9	14.4	14	13.5	12.9	12.1	11.3	10.5	9.1	6.6	12
14			10.8	11.3	11.2	11.3	11	10.2	10.9	10.3	9.5	8.8	6.6	14
16			8.8	9.1	9.2	9.1	9.1	8.1	8.8	8.5	7.7	7.1	6.6	16
18				7.4	7.6	7.5	7.4	6.5	7.2	7	6.3	5.7	5.4	18
20				6.2	6.4	6.3	6.2	5.2	5.9	5.8	5.1	4.5	4.2	20
22					5.4	5.3	5.2	4.1	4.9	4.7	4.1	3.6	3.3	22
24					4.6	4.4	4.4	3.3	4.1	3.9	3.3	2.9	2.6	24
26						3.7	3.7	2.6	3.4	3.2	2.7	2.2	2	26
28						3.2	3.1	2.1	2.8	2.6	2.2	1.7	1.6	28
30							2.6	1.6	2.3	2.1	1.7	1.3	1.1	30
32							2.2	1.2	1.9	1.7	1.3	0.9	0.8	32
34								.9	1.5	1.3	0.9			34
36									1.2	1.0				36
38										0.7				38

DEMAG AC 100



12 - 60.0m



8.1 x 7.2m



360°



5.4t

Main Boom (m)

Radius	12	16.3	20.5	24.8	29.1	33.4	37.6	38.1	41.9	46.2	50.9	54.7	59.4	Radius
3	72	72	69.9	58.4										3
3.5	65.4	65.7	64.8	58.2										3.5
4	59.7	60.1	59.9	56.3	37.4									4
4.5	54.9	55.2	55.1	53.5	36.5									4.5
5	50.8	51.1	51.1	46	35.6	29.8								5
6	42.2	42.1	39	35.6	33.9	27.2	27.2	25.6						6
7	30.8	32.4	31.2	30.2	27.9	25.1	23.5	23.7						7
8	23.7	25	26.3	25.2	23.4	21.9	19.7	20.1	18.6					8
9		20.1	21.3	21.3	20	19.2	18	18	15.9	15.4				9
10		16.6	17.7	17.7	17.8	17.2	15.8	15.6	14.8	13.3	10.7			10
12		12	13	13.7	13.6	13.3	13.2	12.1	12.1	11.3	10.5	9.1	6.6	12
14			10.4	10.6	10.5	10.3	10.6	9.6	10.3	9.7	8.8	8.1	6.6	14
16			8.3	8.5	8.7	8.6	8.5	7.5	8.2	7.9	7.1	6.5	6.1	16
18				7	7.1	7	7	5.9	6.7	6.4	5.7	5.1	4.7	18
20				5.8	5.9	5.8	5.7	4.7	5.5	5.3	4.5	4	3.7	20
22					5	4.8	4.8	3.7	4.5	4.3	3.6	3.1	2.9	22
24					4.2	4	4	2.9	3.7	3.5	2.9	2.4	2.2	24
26						3.4	3.3	2.3	3	2.8	2.3	1.8	1.6	26
28						2.8	2.7	1.7	2.4	2.3	1.8	1.4	1.2	28
30							2.3	1.3	2	1.8	1.4	1.0	0.8	30
32							1.9	.9	1.6	1.4	1.0			32
34									1.2	1.1				34
36									1.0	0.8				36